
Integrated Knowledge Management (IKM) Volume 8

Version 1 - Last Updated 11/28/2023

Table of Contents

I. Komet User Guide	1
1. Komet User Guide	3
1.1. Downloading Komet	3
1.2. Installing Komet	3
1.3. First Time Start Up	4
1.4. Importing and Reading-In Data	7
1.5. How To Find A Concept	9
1.5.1. Komet Interface	9
1.5.2. Journal Interface	11
1.6. Viewing Versioning	13
1.7. Editing/Modifying	13
1.7.1. Komet Interface	13
1.7.2. Journal Interface	13
1.8. Exporting and Sharing Data	14
1.8.1. Komet Interface	14
1.8.2. Journal Interface	15
1.9. Viewing Concept Timeline Properties	15
1.9.1. Komet Interface	15
1.9.2. Journal Interface	15

List of Figures

1.1. Komet Download	3
1.2. Komet Installer File	3
1.3. Run Komet	4
1.4. Komet Mac Installer File	4
1.5. Open SpinedArrayStore	5
1.6. Komet Interface	6
1.7. New Journal	6
1.8. Journal UI	7
1.9. Import Artifact	8
1.10. Select File	8
1.11. Komet Concept Search	9
1.12. View Concept Details	10
1.13. Dropdown Options	10
1.14. Hierarchical Navigation	11
1.15. Journal Concept Search	12
1.16. Journal Concept Details	13
1.17. Export Artifact	14
1.18. Time Travel Button	15
1.19. Timeline Panel	15
1.20. Timeline Settings	16
1.21. Properties Toggle	16
1.22. Properties Panel	17
1.23. Timeline and History	18
1.24. Range Toggle	18
1.25. Events Within a Range	19
1.26. History Within a Range	20
1.27. Historical Records Filter	20

Part I. Komet User Guide

Table of Contents

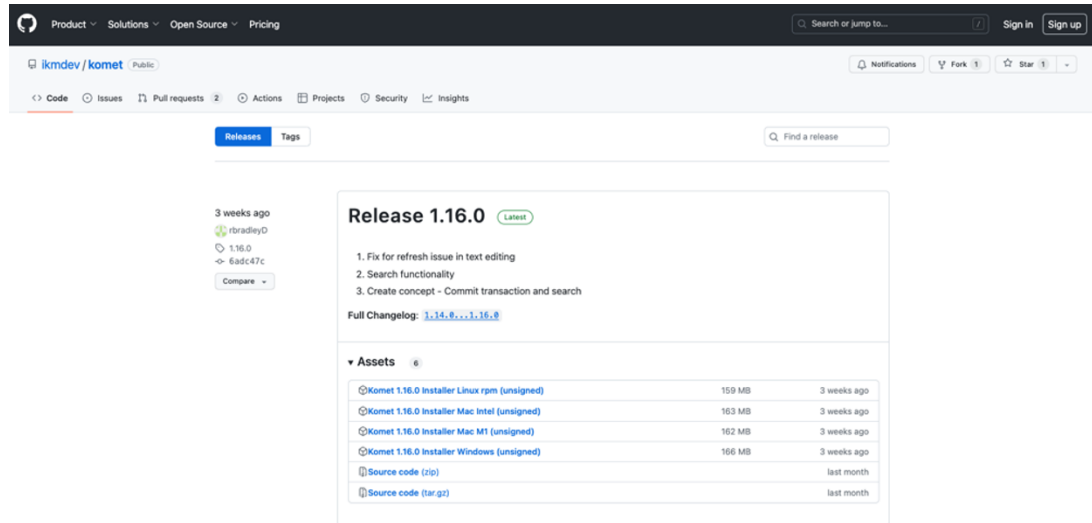
1. Komet User Guide	3
1.1. Downloading Komet	3
1.2. Installing Komet	3
1.3. First Time Start Up	4
1.4. Importing and Reading-In Data	7
1.5. How To Find A Concept	9
1.5.1. Komet Interface	9
1.5.2. Journal Interface	11
1.6. Viewing Versioning	13
1.7. Editing/Modifying	13
1.7.1. Komet Interface	13
1.7.2. Journal Interface	13
1.8. Exporting and Sharing Data	14
1.8.1. Komet Interface	14
1.8.2. Journal Interface	15
1.9. Viewing Concept Timeline Properties	15
1.9.1. Komet Interface	15
1.9.2. Journal Interface	15

1. Komet User Guide

1.1. Downloading Komet

1. Use the following link to download the latest Komet release build for your appropriate operating system

Figure 1.1. Komet Download

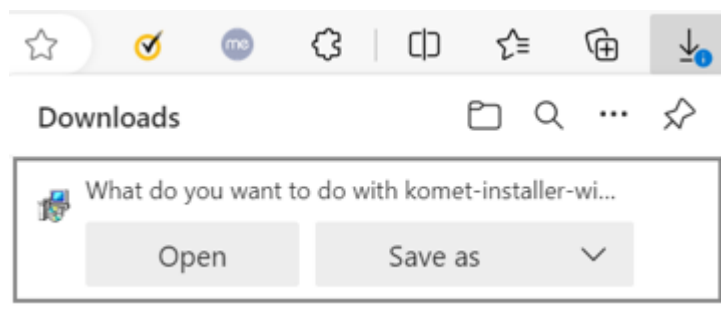


2. Save the download file to the location of your choice
3. The Komet installer will automatically create a "Solor" folder in your OSDisk (C:) -> Users -> [your personal user name] folder

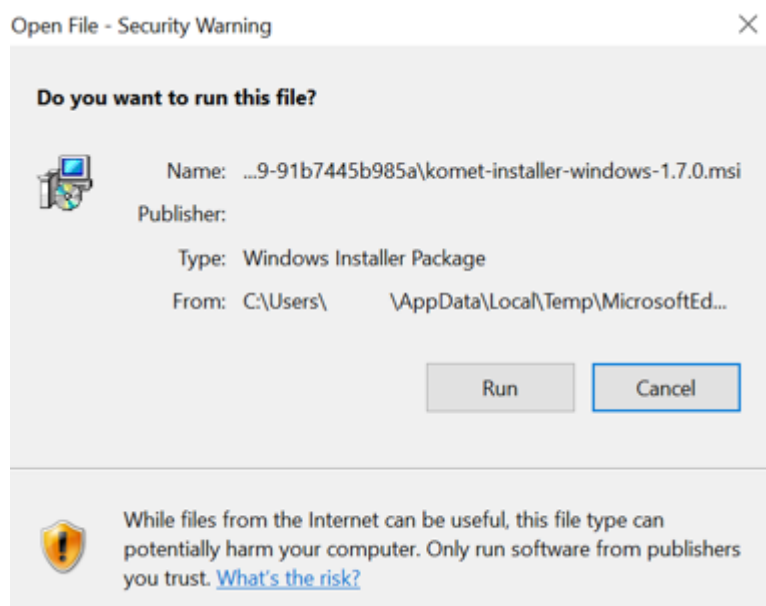
1.2. Installing Komet

1. From your browser's downloads, open the Komet Installer file

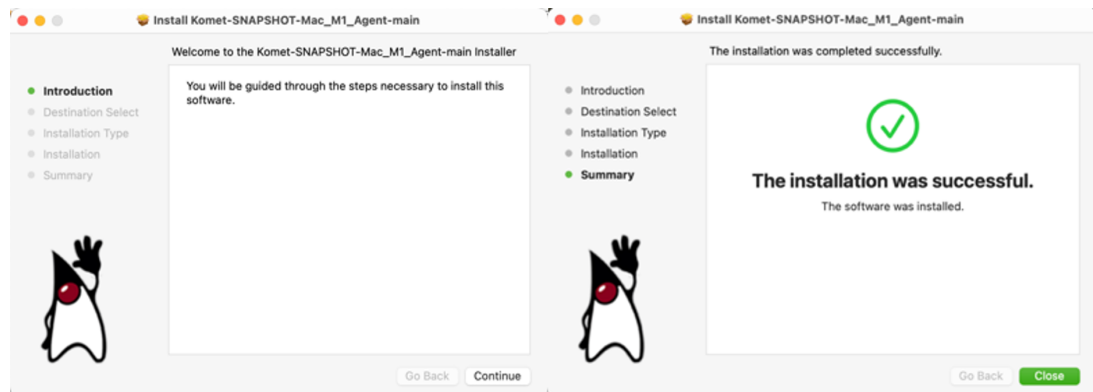
Figure 1.2. Komet Installer File



2. A message will pop up asking if you want to run the Komet Installer File, click "Run"

Figure 1.3. Run Komet

3. On Mac, run the installer and follow the onscreen installation instructions until installation is complete

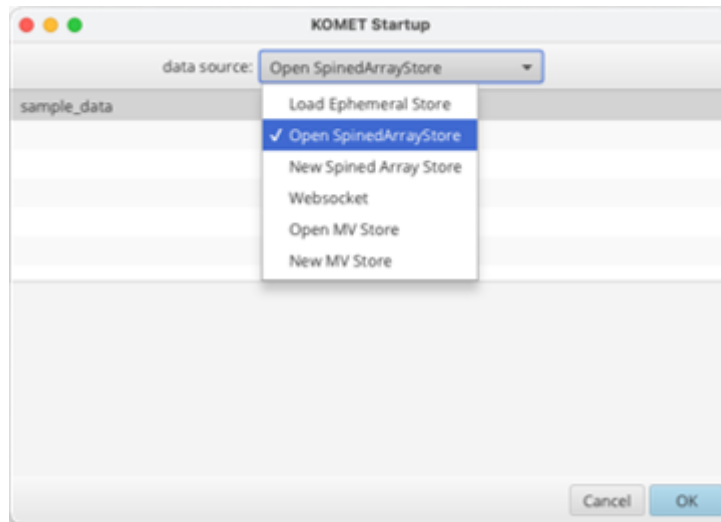
Figure 1.4. Komet Mac Installer File

4. Once complete, nothing will automatically pop-up, so you will need to verify the install was successful by searching in your applications folder or your Operating System's search feature for the Komet app

1.3. First Time Start Up

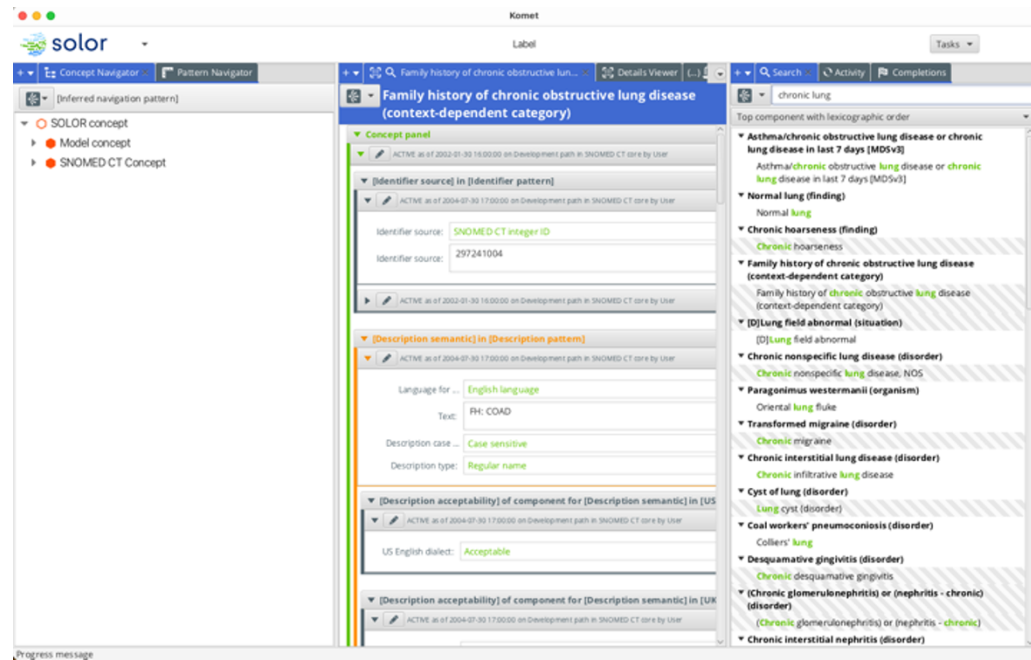
1. For Windows, go to your search bar or apps folder and open "Komet". For Mac, go to your applications folder, search for Komet, and run the desktop version Komet contributed application.
2. The below Komet Startup window will open. Change data source to "Open SpinedArrayStore"

Figure 1.5. Open SpinedArrayStore



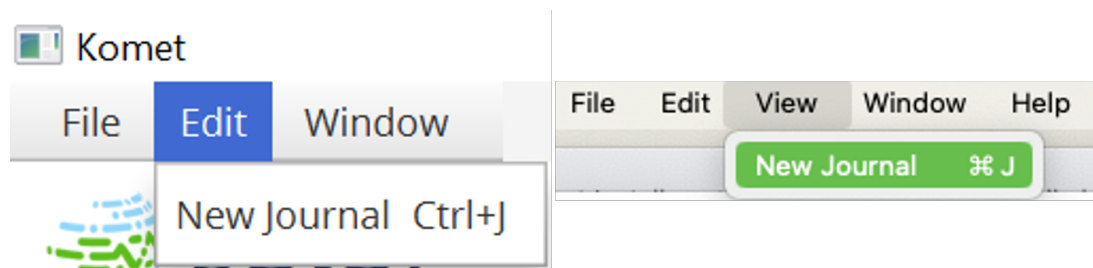
3. Select the data source you would like to use and click “Ok” in the bottom right. Proceed to Step 8.
4. If you do not see a data source, copy and paste the zip file containing the desired data to the OSDisk (C:) -> Users -> [your personal user name] -> Solor folder
5. Right click the desired data zip file and select "Unzip Here" so the data is stored in the Solor folder
6. Exit and re-open Komet. Change the data source to “Open SpinedArrayStore”; your data source should appear
7. Select the data source you would like to use and click “Ok” in the bottom right
8. Komet will open and load in with the 'default' view that consists of:
 - a. The Navigation activity stream in the left-hand panel
 - b. The Detail Viewer activity stream in the center panel
 - c. The Search activity stream in the right-hand panel

Figure 1.6. Komet Interface



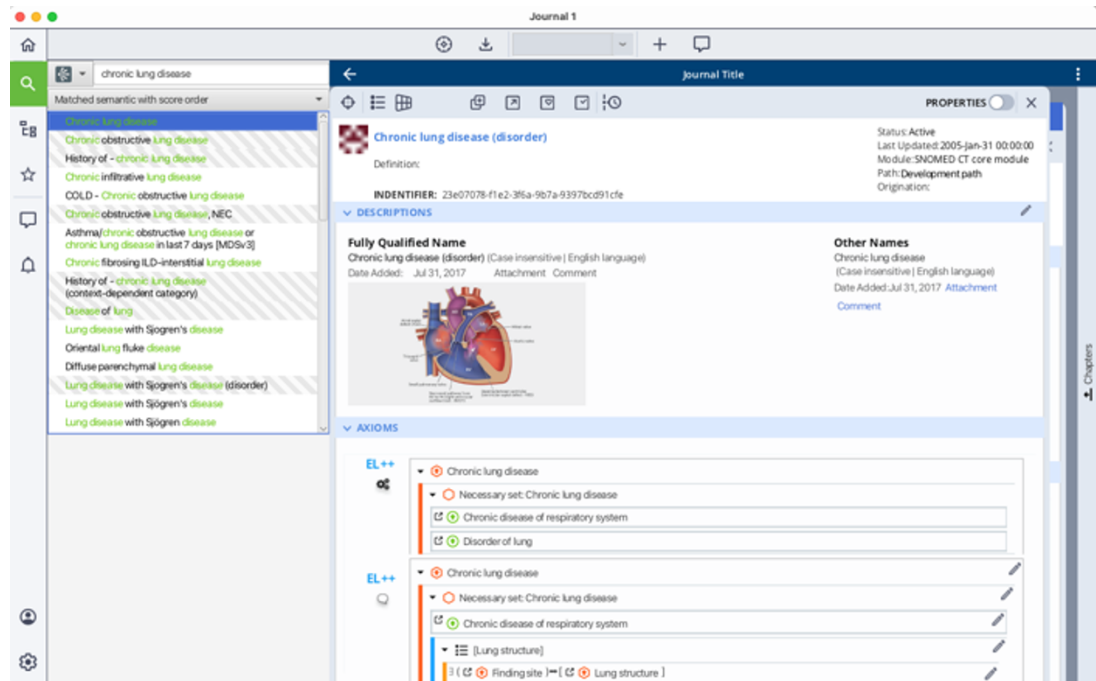
9. As a user, you can click and drag any of these activity streams into a different panel to reorganize as needed
10. To view the new Komet prototype user interface (UI), go to the top menu and select Edit → New Journal on Windows or View → New Journal on Mac

Figure 1.7. New Journal



A Journal window will appear with the new the prototype UI

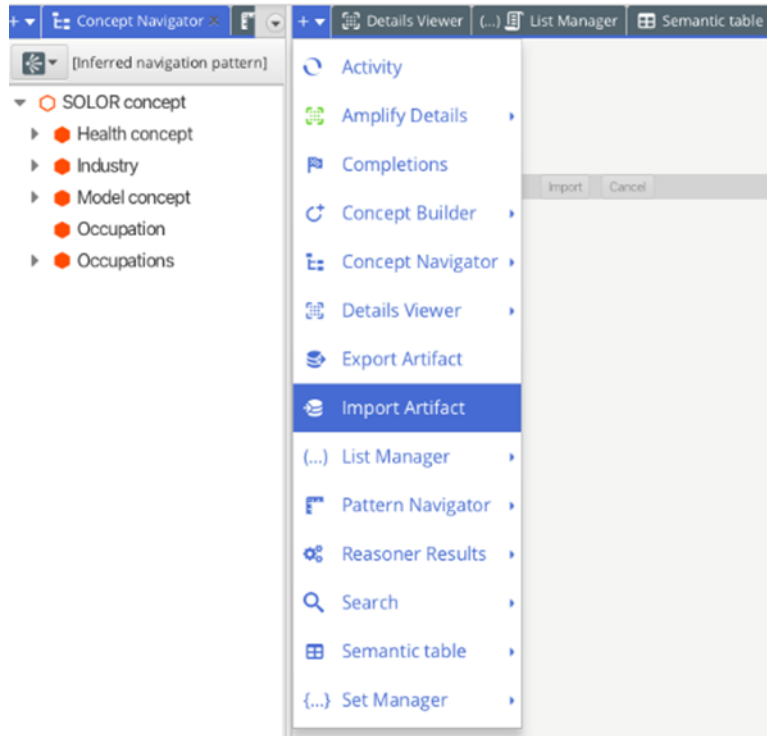
Figure 1.8. Journal UI



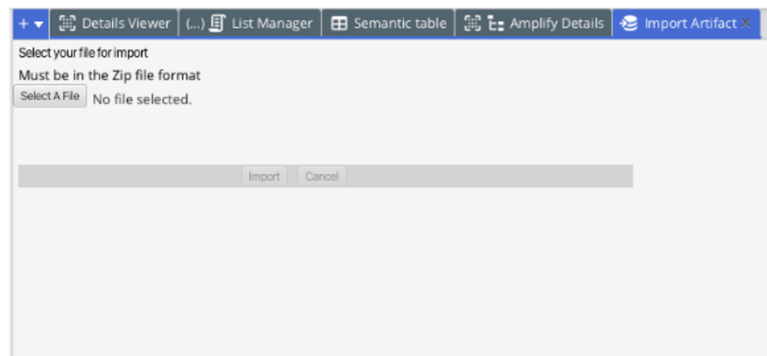
1.4. Importing and Reading-In Data

Note: This process is to import data after you have finished the initial Komet download and install process

1. In the Detail Viewer activity stream (default location: center panel) click drop down button “+”, and click “Import Artifact”

Figure 1.9. Import Artifact

2. A “Select your file for import” window will pop up. Click on “Select A File” button

Figure 1.10. Select File

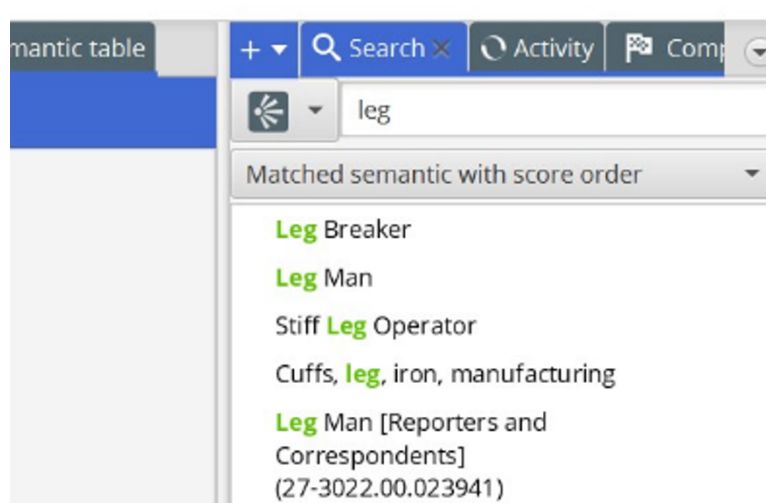
3. Browse and select the zip file of your choice and click “Open”
4. A progress bar will monitor the import of your files
5. The files will be displayed in the left panel under “Concept Navigator”

1.5. How To Find A Concept

1.5.1. Komet Interface

1. Type the keyword or concept name into the "enter search query" bar in the Search activity stream (default location: right panel) to find a concept

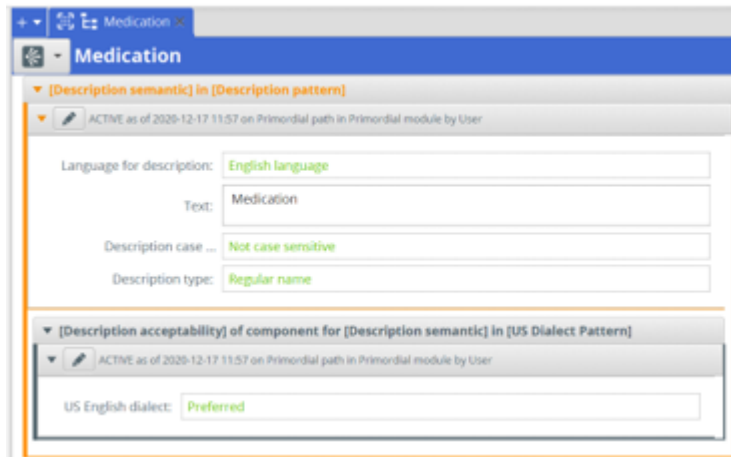
Figure 1.11. Komet Concept Search



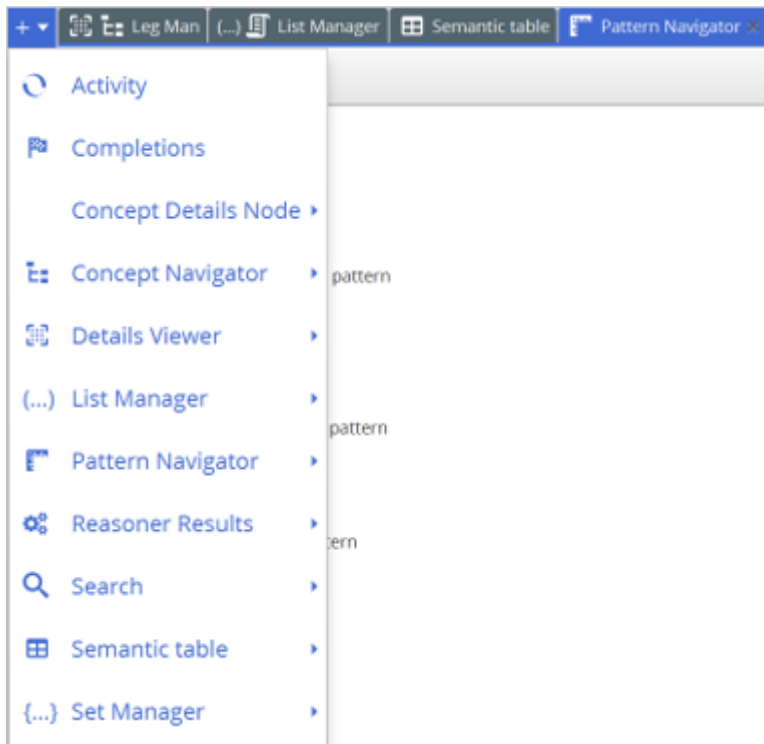
2. Results containing the keyword will populate in the field below the search bar, with keywords highlighted in green
3. Click on a result to view more details in the center panel

1.5.1.1. How to View Details

1. To view a concept, click or drag it to the Detail Viewer activity stream (default location: center panel)
2. Use the tabs at the top of the Detail Viewer activity stream (default location: center panel) to view various details and information about the selected concept, such as description semantics

Figure 1.12. View Concept Details

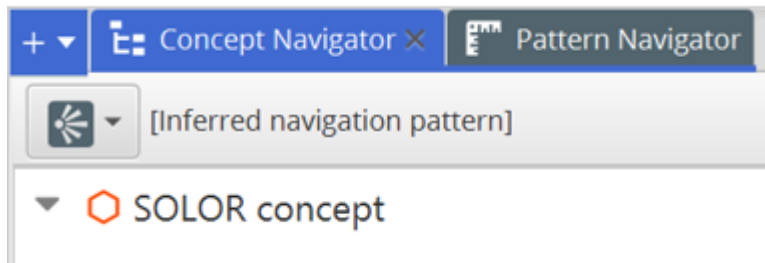
3. Use the “+” drop down to select additional tabs to display information or to re-open a closed tab for a certain concept

Figure 1.13. Dropdown Options

4. You can select the language and/or dialect for the concept you want to display

1.5.1.2. How to Visualize Hierarchical Relationships

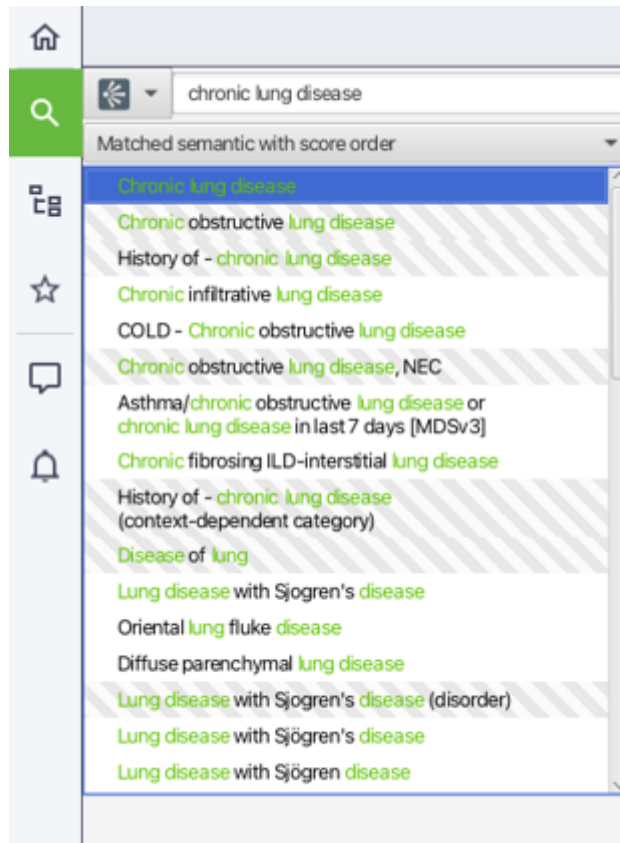
1. To view hierarchical relationships, utilize the “Concept Navigator” and “Pattern Navigator” tabs in the Navigation activity stream (default location: left panel)

Figure 1.14. Hierarchical Navigation

2. These tabs can also be found when viewing a concept in the Detail Viewer activity stream (default location: center panel) by clicking the “+” drop down menu
3. Utilize the arrows within the Navigation activity stream (default location: left panel) to collapse or expand hierarchical relationships
4. The Detail Viewer activity stream (default location: center panel) can display additional views, including:
 - a. Description Semantic with language and dialect
 - b. Relationship destination and relationship origin
 - c. EL++ Stated terminological axioms showing hierarchical relationships

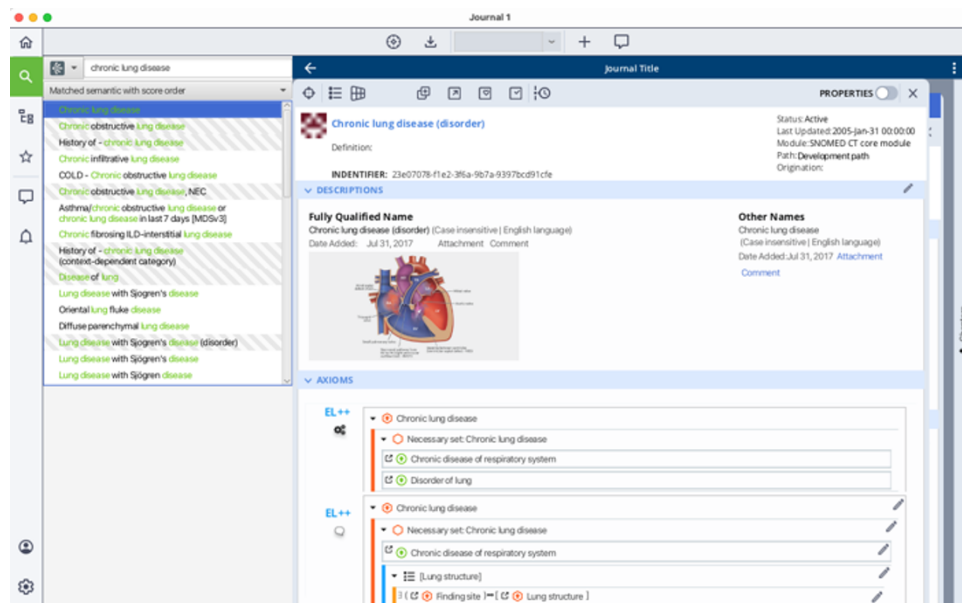
1.5.2. Journal Interface

1. In the global navigation menu to the left, click the magnifying glass to open the search tray
2. Type a concept name in the search field and press Enter. A list of related results will appear.

Figure 1.15. Journal Concept Search

1.5.2.1. How to View Details

1. In the search results, double click the concept you wish to view. A concept window with concept details will open to the right.

Figure 1.16. Journal Concept Details

1.5.2.2. How to Visualize Hierarchical Relationships

Will be in next test installers

1.6. Viewing Versioning

1.7. Editing/Modifying

1.7.1. Komet Interface

1.7.1.1. Primitive Editing

text values or number changes

1.7.1.2. Concept Editing

language change from English to French

1.7.1.3. STAMP Editing

1.7.1.4. Retiring Concepts

1.7.2. Journal Interface

1.7.2.1. Primitive Editing

text values or number changes

1.7.2.2. Concept Editing

language change from English to French

1.7.2.3. STAMP Editing

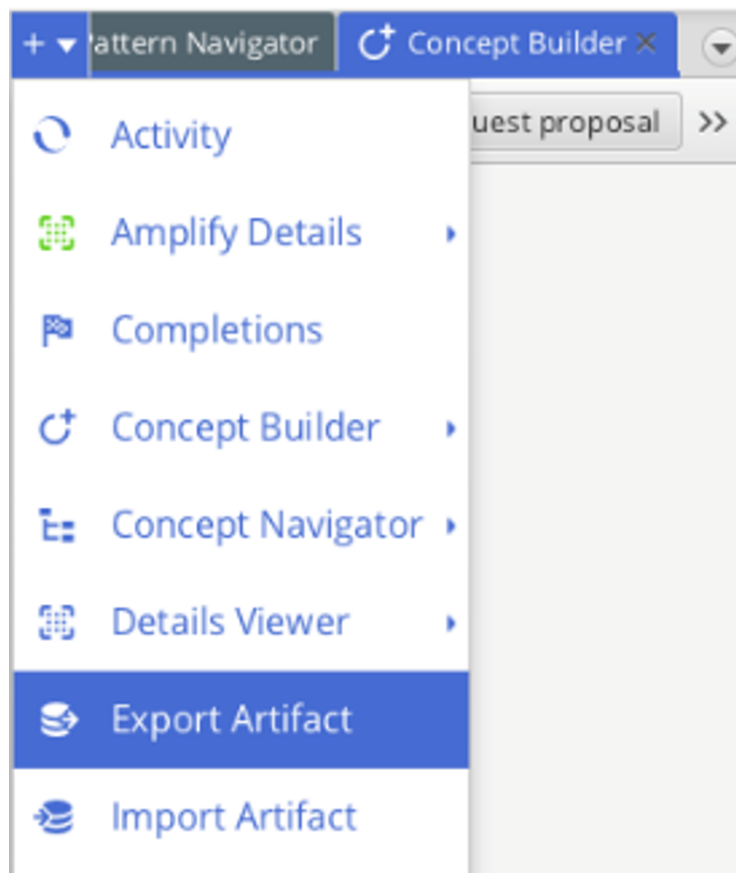
1.7.2.4. Retiring Concepts

1.8. Exporting and Sharing Data

1.8.1. Komet Interface

1. Select the concept or concepts you would like to export on the Navigation activity stream (default location: left panel)
 - a. Use shift or control click to select multiple concepts
2. Right click and select export OR use the “+” dropdown menu and select "Export Artifact"

Figure 1.17. Export Artifact



1.8.2. Journal Interface

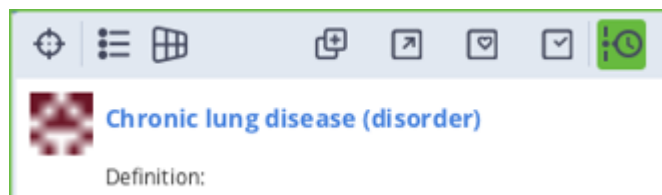
1.9. Viewing Concept Timeline Properties

1.9.1. Komet Interface

1.9.2. Journal Interface

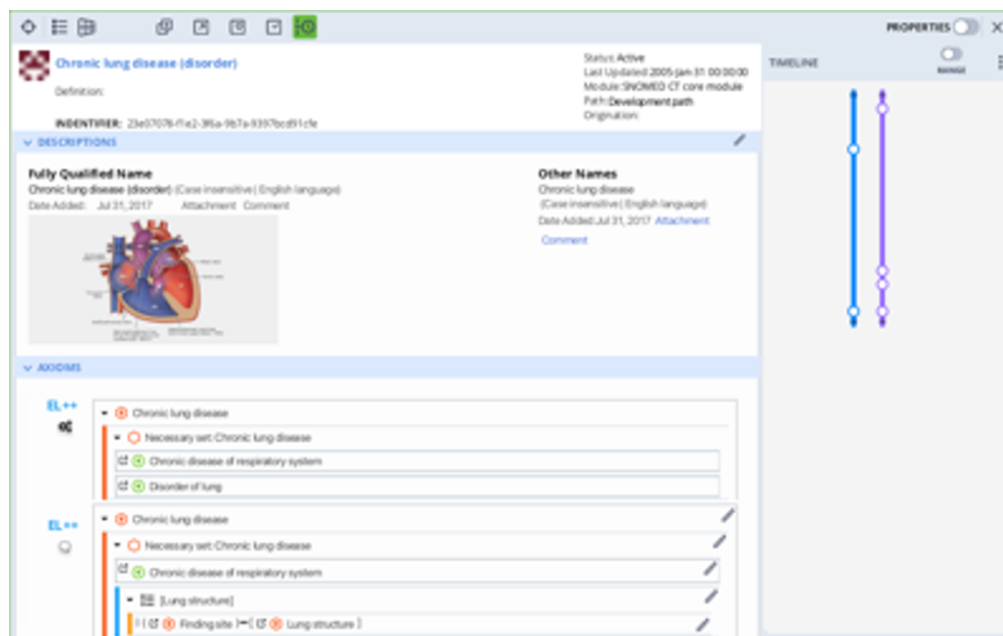
1. In the tool ribbon at the top of the concept window, click the green Time Travel button

Figure 1.18. Time Travel Button

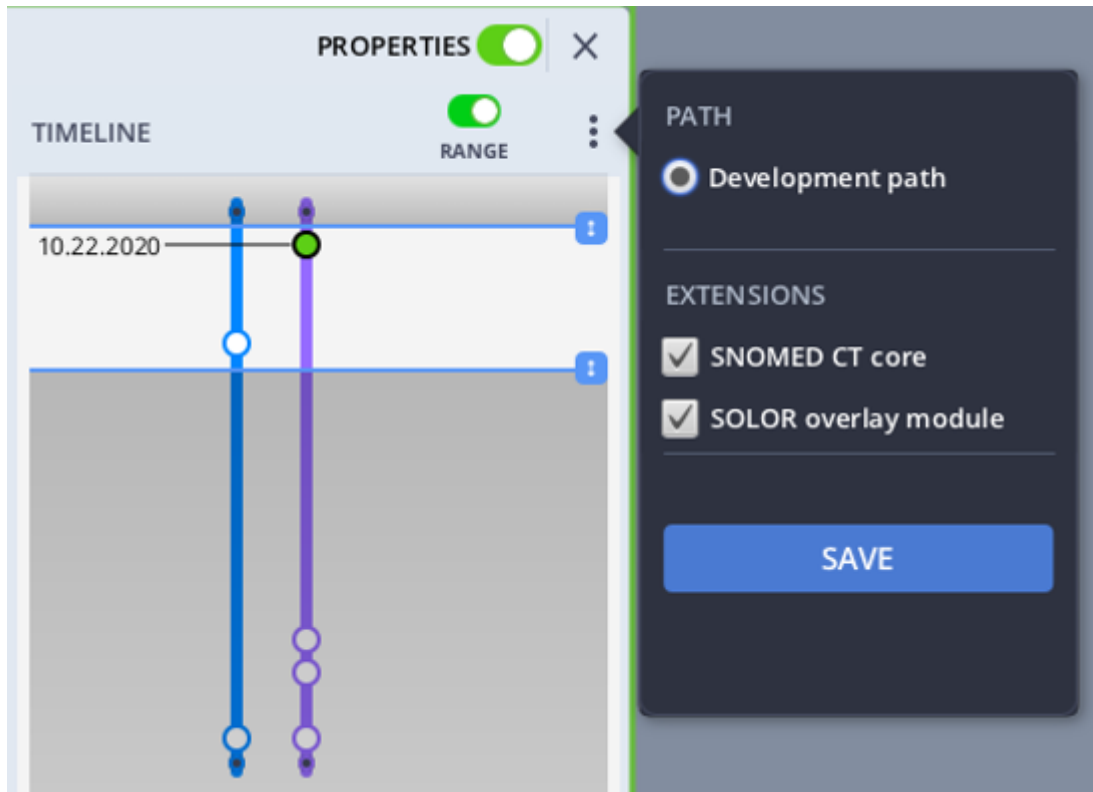


The Timeline panel opens to the right. Colored lines in the Timeline panel represent different data extensions.

Figure 1.19. Timeline Panel



2. Click the three vertical dots on the right to view Timeline settings. You can change which extensions you wish to view in the Timeline panel.

Figure 1.20. Timeline Settings

3. Click the Properties toggle on the right, above the Timeline panel, to enable the Properties panel

Figure 1.21. Properties Toggle

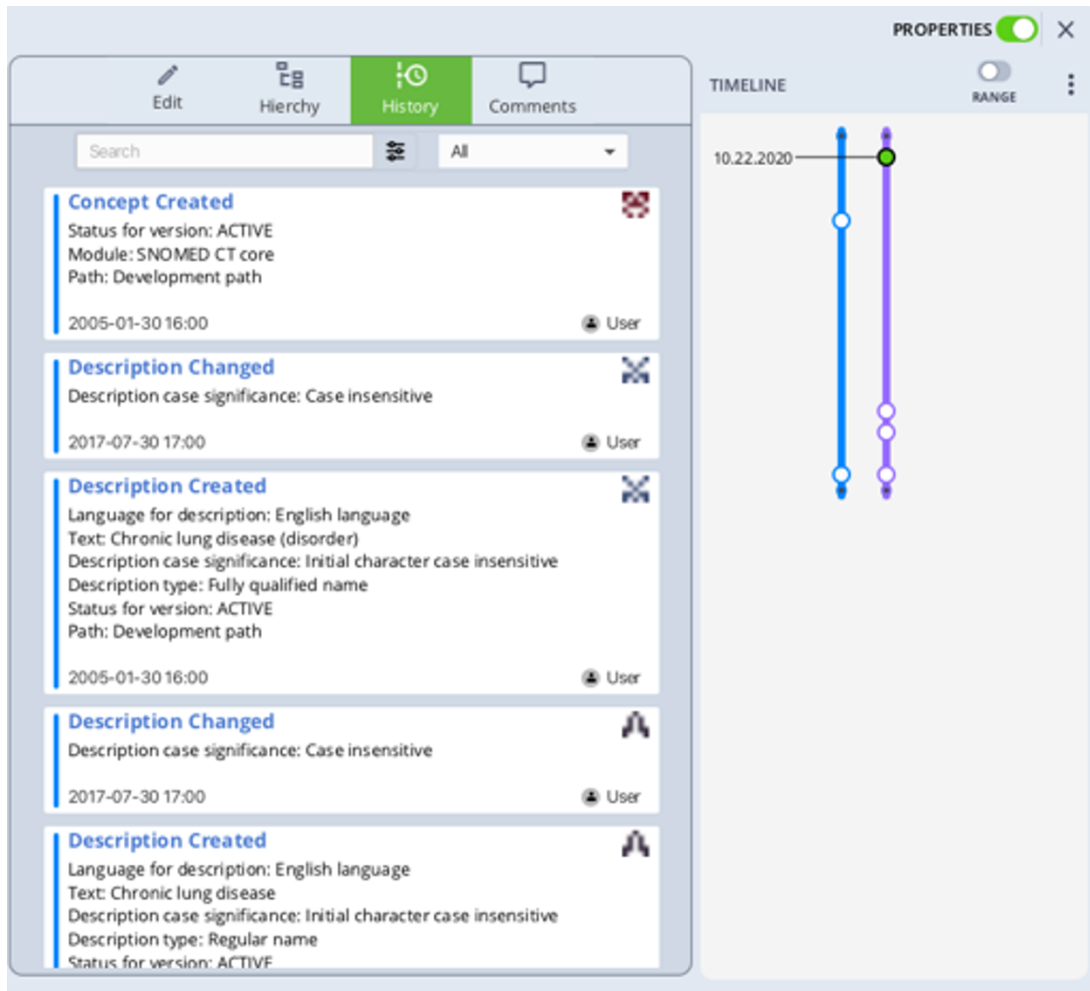
This opens the Properties panel between the concept details view and the Timeline panel. The Properties panel contains options for the Edit, Hierarchy, History, and Comments views.

Figure 1.22. Properties Panel

The screenshot displays the Properties Panel in the History view. At the top, there are four tabs: Edit, Hierchy, History (selected), and Comments. Below the tabs is a search bar and a filter dropdown set to 'All'. The main content area shows a list of five events, each with a title, details, a timestamp, and a user icon.

Event Title	Details	Timestamp	User
Concept Created	Status for version: ACTIVE Module: SNOMED CT core Path: Development path	2005-01-30 16:00	User
Description Changed	Description case significance: Case insensitive	2017-07-30 17:00	User
Description Created	Language for description: English language Text: Chronic lung disease (disorder) Description case significance: Initial character case insensitive Description type: Fully qualified name Status for version: ACTIVE Path: Development path	2005-01-30 16:00	User
Description Changed	Description case significance: Case insensitive	2017-07-30 17:00	User
Description Created	Language for description: English language Text: Chronic lung disease Description case significance: Initial character case insensitive Description type: Regular name Status for version: ACTIVE		

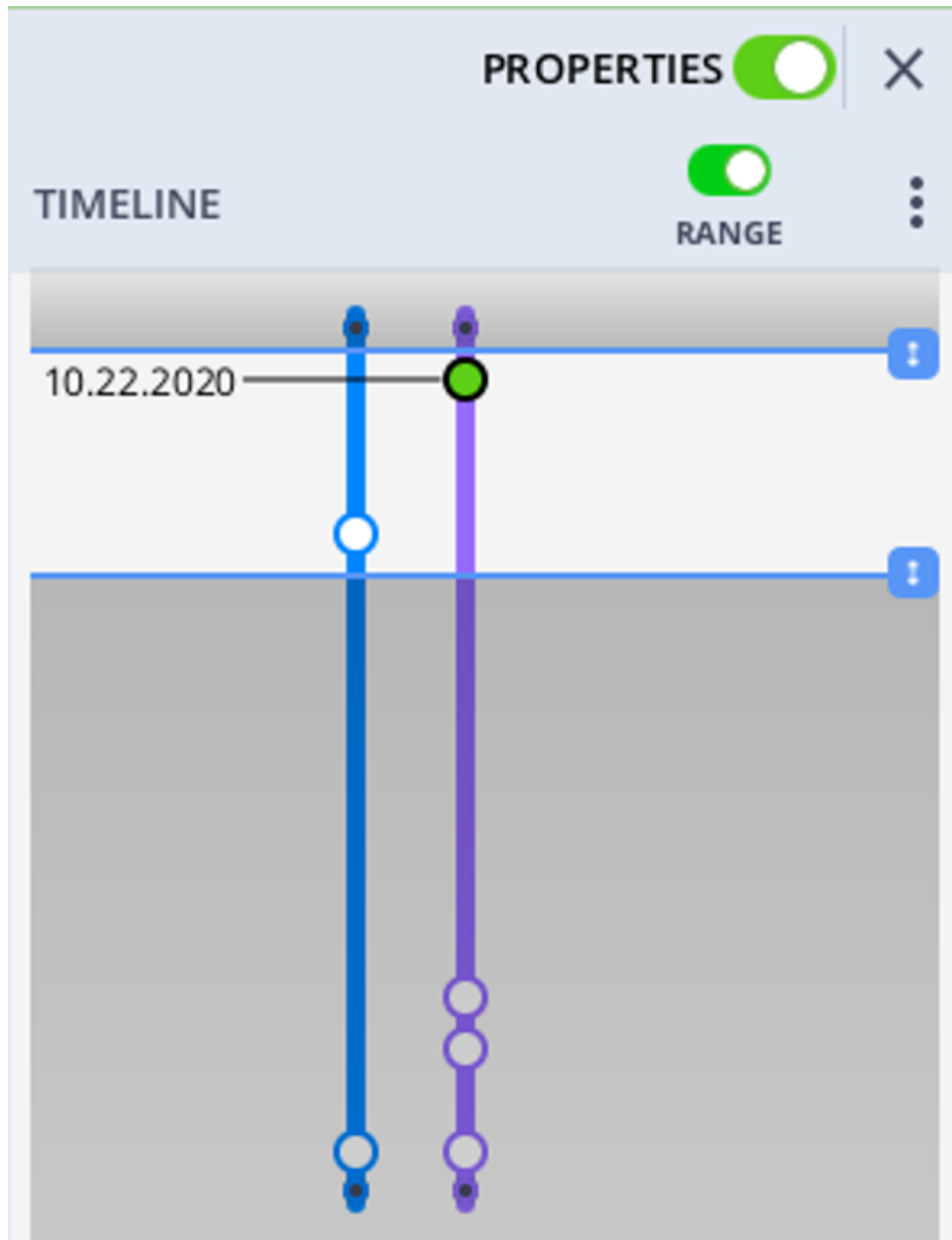
4. Click the History view in the Properties panel. The History view shows event details for each event dot on the Timeline extension(s).

Figure 1.23. Timeline and History

5. Click the Range toggle below the Properties toggle to enable range selection on the timeline

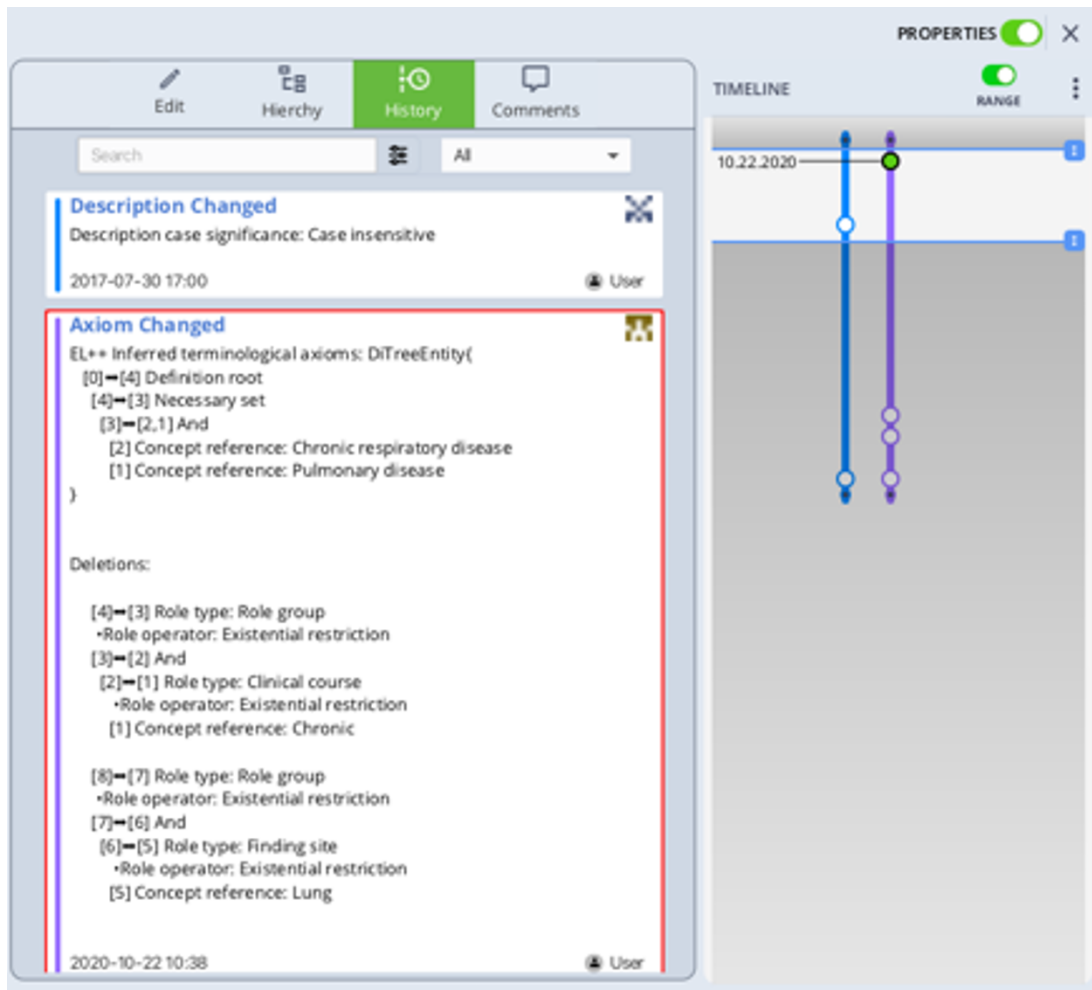
Figure 1.24. Range Toggle

This allows you to select event dots you wish to view within a specific time range.

Figure 1.25. Events Within a Range

When you define a specific time range, the History view only shows event details for event dots contained within that time range. When an event dot is selected, the dot turns green and the corresponding historical record is outlined red.

Figure 1.26. History Within a Range



- Click the dropdown at the top of the History view to filter historical records by Concept, Description, and Axiom change events

Figure 1.27. Historical Records Filter

